

*Soffietto in stainless steel*

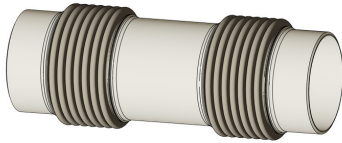
*Manicotti in carbon steel*

*Movimenti non contemporanei*

*Dimensionamento in accordo norme EJMA*

*Cicli 1000*

DN	Movimenti (mm)		L (mm)	Ø <sub>e</sub> mm	Spring rates (N/mm)		AREA Cm <sup>2</sup>	Manicotti Øe x s	Peso Kg~
	Δx	Δy			Fx	Fy			
<b>1100</b>	52	2	275	1204	252	37609	10563	1120 X 8	24.7
<b>1100</b>	104	7.5	405	1204	126	8072	10563	1120 X 8	35.9
<b>1100</b>	132	12.2	470	1204	97	2915	10563	1120 X 8	41.5
<b>1200</b>	55	2	285	1305	254	44023	12483	1220 X 8	27.3
<b>1200</b>	110	8	420	1305	127	9617	12483	1220 X 8	39.9
<b>1200</b>	136	12.5	490	1305	101	3409	12483	1220 X 8	46.2
<b>1300</b>	42	1.2	260	1404	388	52996	14520	1320 X 8	26.1
<b>1300</b>	113	8.6	455	1404	145	22651	14520	1320 X 8	43.2
<b>1300</b>	141	13.4	530	1404	116	6788	14520	1320 X 8	50.1
<b>1400</b>	43	4.6	260	1506	385	66212	16757	1420 X 8	28.3
<b>1400</b>	116	10.2	455	1506	144	27493	16757	1420 X 8	47.1
<b>1400</b>	145	12.5	530	1506	115	8154	16757	1420 X 8	54.6
<b>1500</b>	44	1.1	260	1608	382	66589	19155	1520 X 8	30.6
<b>1500</b>	103	6	415	1608	164	26415	19155	1520 X 8	46.9
<b>1500</b>	148	12.1	530	1608	115	8015	19155	1520 X 8	59.2
<b>1600</b>	45	1	260	1711	367	76789	21712	1620 X 8	32.9
<b>1600</b>	105	5.8	410	1711	162	32433	21712	1620 X 8	50.9
<b>1600</b>	150	11.7	530	1711	113	9610	21712	1620 X 8	64.3
<b>1700</b>	46	1	260	1813	363	91759	24444	1720 X 8	35.2
<b>1700</b>	110	5.6	410	1813	155	42264	24444	1720 X 8	54.6
<b>1700</b>	140	9.1	495	1813	121	12171	24444	1720 X 8	64.3
<b>1800</b>	47	1	260	1914	369	106574	27308	1820 X 8	37.1
<b>1800</b>	110	5.2	410	1914	158	44962	27308	1820 X 8	58.1
<b>1800</b>	282	8.5	495	1914	123	13322	27308	1820 X 8	68.4



*Soffietto in stainless steel*

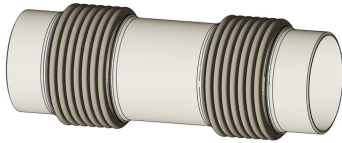
*Manicotti in carbon steel*

*Movimenti non contemporanei*

*Dimensionamento in accordo norme EJMA*

*Cicli 1000*

DN	Movimenti (mm)		L (mm)	Ø <sub>e</sub> mm	Spring rates (N/mm)		AREA Cm <sup>2</sup>	Manicotti Øe x s	Peso Kg~
	Δx	Δy			Fx	Fy			
<b>200</b>	16	2	205	265	175	814	458	219.1 x 6.3	2.5
<b>200</b>	42	7	285	265	66	102	458	219.1 x 6.3	3.7
<b>200</b>	107	45	480	265	26	37	458	219.1 x 6.3	6.5
<b>250</b>	23	3	225	323	139	2172	690	273 x 7.1	3.4
<b>250</b>	82	23	395	323	40	191	690	273 x 7.1	6.6
<b>250</b>	107	36	465	323	31	71	690	273 x 7.1	7.8
<b>300</b>	25	2	225	376	142	2545	952	323.9 x 8	4.2
<b>300</b>	77	16	375	376	47	319	952	323.9 x 8	7.3
<b>300</b>	110	33	465	376	33	123	952	323.9 x 8	9.2
<b>350</b>	30	2	230	358	126	2375	1145	355.6 x 8.8	4.7
<b>350</b>	82	15	370	358	46	444	1145	355.6 x 8.8	7.9
<b>350</b>	120	32	470	358	31	152	1145	355.6 x 8.8	10.3
<b>400</b>	32	2	235	467	115	6155	1484	406.4 x 8.8	5.5
<b>400</b>	80	13	360	467	46	770	1484	406.4 x 8.8	8.9
<b>400</b>	120	30	465	467	31	167	1484	406.4 x 8.8	11.8
<b>450</b>	35	2	240	524	95	12374	1876	455.6 x 6	6.5
<b>450</b>	83	13	375	524	38	975	1876	455.6 x 6	10.7
<b>450</b>	120	26	465	524	27	335	1876	455.6 x 6	13.6
<b>500</b>	38	2	250	579	164	11023	2303	508 X 6	12.6
<b>500</b>	96	15	400	579	65	1378	2303	508 X 6	19.1
<b>500</b>	125	25	470	579	50	409	2303	508 X 6	23
<b>550</b>	39	2	250	633	163	12698	2765	559 X 6	13.6
<b>550</b>	88	11	375	633	72	1588	2765	559 X 6	20.8
<b>550</b>	116	20	450	633	54	471	2765	559 X 6	25.1



*Soffietto in stainless steel*

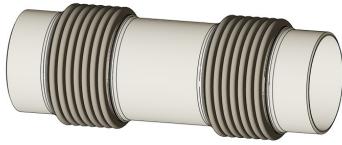
*Manicotti in carbon steel*

*Movimenti non contemporanei*

*Dimensionamento in accordo norme EJMA*

*Cicli 1000*

DN	Movimenti (mm)		L (mm)	Ø <sub>e</sub> mm	Spring rates (N/mm)		AREA Cm <sup>2</sup>	Manicotti Øe x s	Peso Kg~
	Δx	Δy			Fx	Fy			
<b>600</b>	40	2	255	684	176	14042	3263	609.6 x 6	14.9
<b>600</b>	82	11	385	684	78	1756	3263	609.6 x 6	22.8
<b>600</b>	120	19	460	684	59	521	3263	609.6 x 6	27.5
<b>650</b>	40	2	255	734	186	16499	3791	660 x 6	19
<b>650</b>	93	10	390	734	83	3564	3791	660 x 6	24.5
<b>650</b>	120	19	470	734	52	871	3791	660 x 6	29.6
<b>700</b>	43	2	260	787	183	15826	4380	711 x 6	17.2
<b>700</b>	95	10	395	787	81	3419	4380	711 x 6	26.6
<b>700</b>	131	19	480	787	61	835	4380	711 x 6	30.3
<b>750</b>	44	2	260	838	195	20555	4998	762 x 6	18.4
<b>750</b>	98	10	405	838	96	4198	4998	762 x 6	26.4
<b>750</b>	130	19	490	838	65	1102	4998	762 x 6	32.4
<b>800</b>	45	2	265	891	191	26977	5671	813 x 6	19.7
<b>800</b>	100	10	405	891	85	5857	5671	813 x 6	28.3
<b>800</b>	125	15	465	891	69	1423	5671	813 x 6	34.8
<b>850</b>	46	2	265	942	201	31521	6372	864 x 6	21.9
<b>850</b>	92	8	385	942	101	3774	6372	864 x 6	31.5
<b>850</b>	125	15	475	942	73	1553	6372	864 x 6	38.8
<b>900</b>	49	2	270	994	196	32657	7114	914 x 6	24.7
<b>900</b>	98	8	390	994	98	7054	7114	914 x 6	35.9
<b>900</b>	134	15	485	994	71	1723	7114	914 x 6	41.5
<b>1000</b>	49	2	280	1098	224	30635	8762	1016 x 6	27.3
<b>1000</b>	98	8	410	1098	112	6618	8762	1016 x 6	39.9
<b>1000</b>	132	15	505	1098	81	2415	8762	1016 x 6	46.2



*Soffietto in stainless steel*

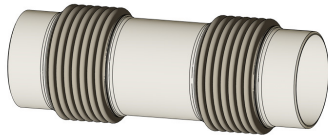
*Manicotti in carbon steel*

*Movimenti non contemporanei*

*Dimensionamento in accordo norme EJMA*

*Cicli 1000*

DN	Movimenti (mm)		L (mm)	Ø <sub>e</sub> mm	Spring rates (N/mm)		AREA Cm <sup>2</sup>	Manicotti Øe x s	Peso Kg~
	Δx	Δy			Fx	Fy			
<b>1100</b>	53	2	275	1204	203	34081	10563	1120 X 8	26.1
<b>1100</b>	105	8	405	1204	102	7362	10563	1120 X 8	43.2
<b>1100</b>	130	12	470	1204	81	2683	10563	1120 X 8	50.1
<b>1200</b>	56	2	285	1305	204	39088	12483	1220 X 8	28.3
<b>1200</b>	112	8	420	1305	102	8433	12483	1220 X 8	47.1
<b>1200</b>	140	13	490	1305	82	3077	12483	1220 X 8	54.6
<b>1300</b>	43	2	260	1404	313	48631	14520	1320 X 8	26.1
<b>1300</b>	115	9	455	1404	117	20517	14520	1320 X 8	43.2
<b>1300</b>	144	14	530	1404	94	6079	14520	1320 X 8	50.1
<b>1400</b>	45	2	260	1506	310	59599	16757	1420 X 8	28.3
<b>1400</b>	115	8	455	1506	116	25144	16757	1420 X 8	47.1
<b>1400</b>	145	13	530	1506	93	7450	16757	1420 X 8	54.6
<b>1500</b>	45	2	260	1608	307	58946	19155	1520 X 8	30.6
<b>1500</b>	106	6	415	1608	132	24678	19155	1520 X 8	46.9
<b>1500</b>	150	12	530	1608	92	7312	19155	1520 X 8	59.2
<b>1600</b>	47	2	260	1711	304	69889	21712	1620 X 8	32.9
<b>1600</b>	110	6	410	1711	130	29485	21712	1620 X 8	50.9
<b>1600</b>	155	12	530	1711	91	8737	21712	1620 X 8	64.3
<b>1700</b>	49	2	260	1813	292	83418	24444	1720 X 8	35.2
<b>1700</b>	113	6	410	1813	125	38421	24444	1720 X 8	54.6
<b>1700</b>	145	9	495	1813	97	11065	24444	1720 X 8	64.3
<b>1800</b>	50	1	260	1914	297	96886	27308	1820 X 8	37.4
<b>1800</b>	110	6	410	1914	127	40874	27308	1820 X 8	58.1
<b>1800</b>	140	9	495	1914	99	12111	27308	1820 X 8	68.4



*Soffietto in stainless steel*

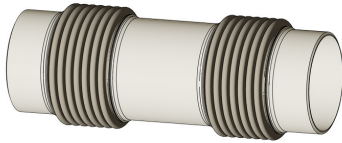
*Manicotti in carbon steel*

*Movimenti non contemporanei*

*Dimensionamento in accordo norme EJMA*

*Cicli 1000*

DN	Movimenti (mm)		L (mm)	Ø <sub>e</sub> mm	Spring rates (N/mm)		AREA Cm <sup>2</sup>	Manicotti Øe x s	Peso Kg~
	Δx	Δy			Fx	Fy			
<b>40</b>	5	1	105	70	204	30	28	48.3 X 3.6	0.3
<b>40</b>	8	2.3	120	70	116	14	28	48.3 X 3.6	0.3
<b>40</b>	20	10	170	70	54	9	28	48.3 X 3.6	0.5
<b>50</b>	8	2	120	74	123	43	31	60.3 X 2.9	0.4
<b>50</b>	13	4.5	140	74	82	17	31	60.3 X 2.9	0.4
<b>50</b>	30	12	220	74	37	11	31	60.3 X 2.9	0.7
<b>65</b>	8	1.5	110	94	126	77	51	76.1 X 2.9	0.5
<b>65</b>	13	2.8	125	94	84	23	51	76.1 X 2.9	0.5
<b>65</b>	32	14	190	94	36	14	51	76.1 X 2.9	0.8
<b>80</b>	8	2	130	101	213	289	63	88.9 X 3.2	0.6
<b>80</b>	14	4.5	160	101	133	44	63	88.9 X 3.2	0.7
<b>80</b>	33	22	265	101	59	19	63	88.9 X 3.2	1
<b>100</b>	10	1.5	205	146	308	33	130	114.3 X 3.6	1.2
<b>100</b>	30	11	305	146	103	51	130	114.3 X 3.6	1.9
<b>100</b>	56	42	440	146	54	24	130	114.3 X 3.6	2.8
<b>125</b>	12	1.5	210	176	265	294	191	139.7 X 4	1.6
<b>125</b>	31	8	295	176	106	59	191	139.7 X 4	2.3
<b>125</b>	60	37	330	176	53	29	191	139.7 X 4	3.4
<b>150</b>	13	1.5	200	210	254	596	277	168.3 X 4.5	1.8
<b>150</b>	38	9	290	210	85	89	277	168.3 X 4.5	2.8
<b>150</b>	73	33	410	210	37	36	277	168.3 X 4.5	4.1
<b>175</b>	15	1.5	200	240	217	812	364	193.7 X 6.3	2.2
<b>175</b>	39	8	280	240	81	217	364	193.7 X 6.3	3.2
<b>175</b>	82	31	405	240	41	54	364	193.7 X 6.3	4.8



*Soffietto in stainless steel*

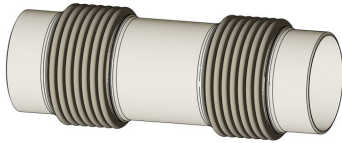
*Manicotti in carbon steel*

*Movimenti non contemporanei*

*Dimensionamento in accordo norme EJMA*

*Cicli 1000*

DN	Movimenti (mm)		L (mm)	Ø <sub>e</sub> mm	Spring rates (N/mm)		AREA Cm <sup>2</sup>	Manicotti Øe x s	Peso Kg~
	Δx	Δy			Fx	Fy			
<b>200</b>	16	1.1	205	265	218	896	458	219.1 x 6.3	2.5
<b>200</b>	42	7.8	285	265	82	113	458	219.1 x 6.3	3.7
<b>200</b>	110	44	480	265	33	41	458	219.1 x 6.3	6.5
<b>250</b>	24	1.9	225	323	172	2390	690	273 x 7.1	3.4
<b>250</b>	84	23	395	323	40	210	690	273 x 7.1	6.6
<b>250</b>	108	38	465	323	36	79	690	273 x 7.1	7.8
<b>300</b>	25	1.9	225	376	177	2800	952	323.9 x 8	4.2
<b>300</b>	92	23	410	376	50	351	952	323.9 x 8	7.3
<b>300</b>	110	33	465	376	42	136	952	323.9 x 8	9.2
<b>350</b>	30	2.1	230	411	156	2613	1145	355.6 x 8.8	4.7
<b>350</b>	90	19	390	411	52	489	1145	355.6 x 8.8	7.9
<b>350</b>	121	33	470	411	39	168	1145	355.6 x 8.8	10.3
<b>400</b>	33	2.1	235	467	143	6770	1484	406.4 x 8.8	5.5
<b>400</b>	81	16	380	467	52	848	1484	406.4 x 8.8	8.9
<b>400</b>	124	30	465	467	38	284	1484	406.4 x 8.8	11.8
<b>450</b>	35	2.2	240	524	118	13611	1876	455.6 x 6	6.5
<b>450</b>	88	14	375	524	47	1073	1876	455.6 x 6	10.7
<b>450</b>	124	27	465	524	34	369	1876	455.6 x 6	13.6
<b>500</b>	39	2.4	250	579	203	12126	2303	508 X 6	9.5
<b>500</b>	95	14.9	400	579	81	1516	2303	508 X 6	14.5
<b>500</b>	125	25	470	579	63	450	2303	508 X 6	17
<b>550</b>	40	2.2	250	633	203	13968	2765	559 X 6	11.6
<b>550</b>	88	11.2	375	633	90	1747	2765	559 X 6	17.8
<b>550</b>	115	20	450	633	68	519	2765	559 X 6	21.1



*Soffietto in stainless steel*

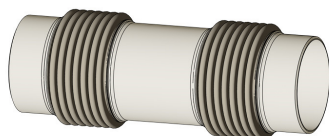
*Manicotti in carbon steel*

*Movimenti non contemporanei*

*Dimensionamento in accordo norme EJMA*

*Cicli 1000*

DN	Movimenti (mm)		L (mm)	Ø <sub>e</sub> mm	Spring rates (N/mm)		AREA Cm <sup>2</sup>	Manicotti Øe x s	Peso Kg~
	Δx	Δy			Fx	Fy			
<b>600</b>	40	2.2	255	684	219	15446	3263	609.6 x 6	12.6
<b>600</b>	86	11	385	684	97	1931	3263	609.6 x 6	19.1
<b>600</b>	123	20	460	684	73	574	3263	609.6 x 6	23
<b>650</b>	40	2	255	734	231	18150	3791	660 x 6	13.6
<b>650</b>	93	10.5	390	734	102	3920	3791	660 x 6	20.8
<b>650</b>	122	19	470	734	77	958	3791	660 x 6	25.1
<b>700</b>	43	2.1	260	787	228	17405	4380	711 x 6	14.9
<b>700</b>	95	10.4	395	787	101	3760	4380	711 x 6	22.8
<b>700</b>	130	19	480	787	76	919	4380	711 x 6	27.5
<b>750</b>	44	2	260	838	242	22610	4998	762 x 6	16
<b>750</b>	96	10	405	838	107	4618	4998	762 x 6	24.5
<b>750</b>	130	19	490	838	81	1213	4998	762 x 6	29.6
<b>800</b>	45	2	265	891	237	29675	5671	813 x 6	17.2
<b>800</b>	100	10	405	891	105	6442	5671	813 x 6	26.6
<b>800</b>	125	15	465	891	86	1565	5671	813 x 6	30.3
<b>850</b>	46	2	265	942	250	34674	6372	864 x 6	18.4
<b>850</b>	92	8	385	942	125	4152	6372	864 x 6	26.4
<b>850</b>	132	15	475	942	91	1708	6372	864 x 6	32.8
<b>900</b>	48	2	270	994	244	35923	7114	914 x 6	19.8
<b>900</b>	96	8	390	994	122	7760	7114	914 x 6	28.3
<b>900</b>	132	16	485	994	89	1896	7114	914 x 6	34.8
<b>1000</b>	48	2	280	1098	279	33699	8762	1016 x 6	21.9
<b>1000</b>	96	8	410	1098	129	7280	8762	1016 x 6	31.5
<b>1000</b>	132	15	505	1098	101	2657	8762	1016 x 6	38.8



*Soffietto in stainless steel*

*Manicotti in carbon steel*

*Movimenti non contemporanei*

*Dimensionamento in accordo norme EJMA*

*Cicli 1000*

DN	Movimenti (mm)		L (mm)	Ø <sub>e</sub> mm	Spring rates (N/mm)		AREA Cm <sup>2</sup>	Manicotti Øe x s	Peso Kg~
	Δx	Δy			Fx	Fy			
<b>40</b>	5	1	105	70	164	28	28	48.3 X 3.6	0.3
<b>40</b>	9	2	120	70	94	12	28	48.3 X 3.6	0.3
<b>40</b>	20	11	180	70	41	7	28	48.3 X 3.6	0.5
<b>50</b>	9	2	120	74	88	36	31	60.3 X 2.9	0.4
<b>50</b>	14	5	140	74	66	13	31	60.3 X 2.9	0.4
<b>50</b>	29	22	220	74	30	8	31	60.3 X 2.9	0.7
<b>65</b>	9	2	110	94	102	65	51	76.1 X 2.9	0.5
<b>65</b>	13	3	125	94	68	16	51	76.1 X 2.9	0.5
<b>65</b>	30	14	190	94	29	9	51	76.1 X 2.9	0.8
<b>80</b>	9	2	130	101	172	233	63	88.9 X 3.2	0.6
<b>80</b>	14	5	160	101	107	31	63	88.9 X 3.2	0.7
<b>80</b>	31	21	265	101	48	12	63	88.9 X 3.2	1
<b>100</b>	8	2	205	146	248	307	130	114.3 X 3.6	1.2
<b>100</b>	28	11	305	146	83	39	130	114.3 X 3.6	1.9
<b>100</b>	54	40	440	146	43	15	130	114.3 X 3.6	2.8
<b>125</b>	11	2	210	176	214	215	191	139.7 X 4	1.6
<b>125</b>	30	9	295	176	85	41	191	139.7 X 4	2.3
<b>125</b>	60	35	330	176	43	19	191	139.7 X 4	3.4
<b>150</b>	11	1	200	210	205	477	277	168.3 X 4.5	1.8
<b>150</b>	35	9	290	210	68	78	277	168.3 X 4.5	2.8
<b>150</b>	70	32	410	210	36	27	277	168.3 X 4.5	4.1
<b>175</b>	15	2	200	240	174	677	364	193.7 X 6.3	2.2
<b>175</b>	40	8	280	240	85	159	364	193.7 X 6.3	3.2
<b>175</b>	78	30	405	240	33	36	364	193.7 X 6.3	4.8